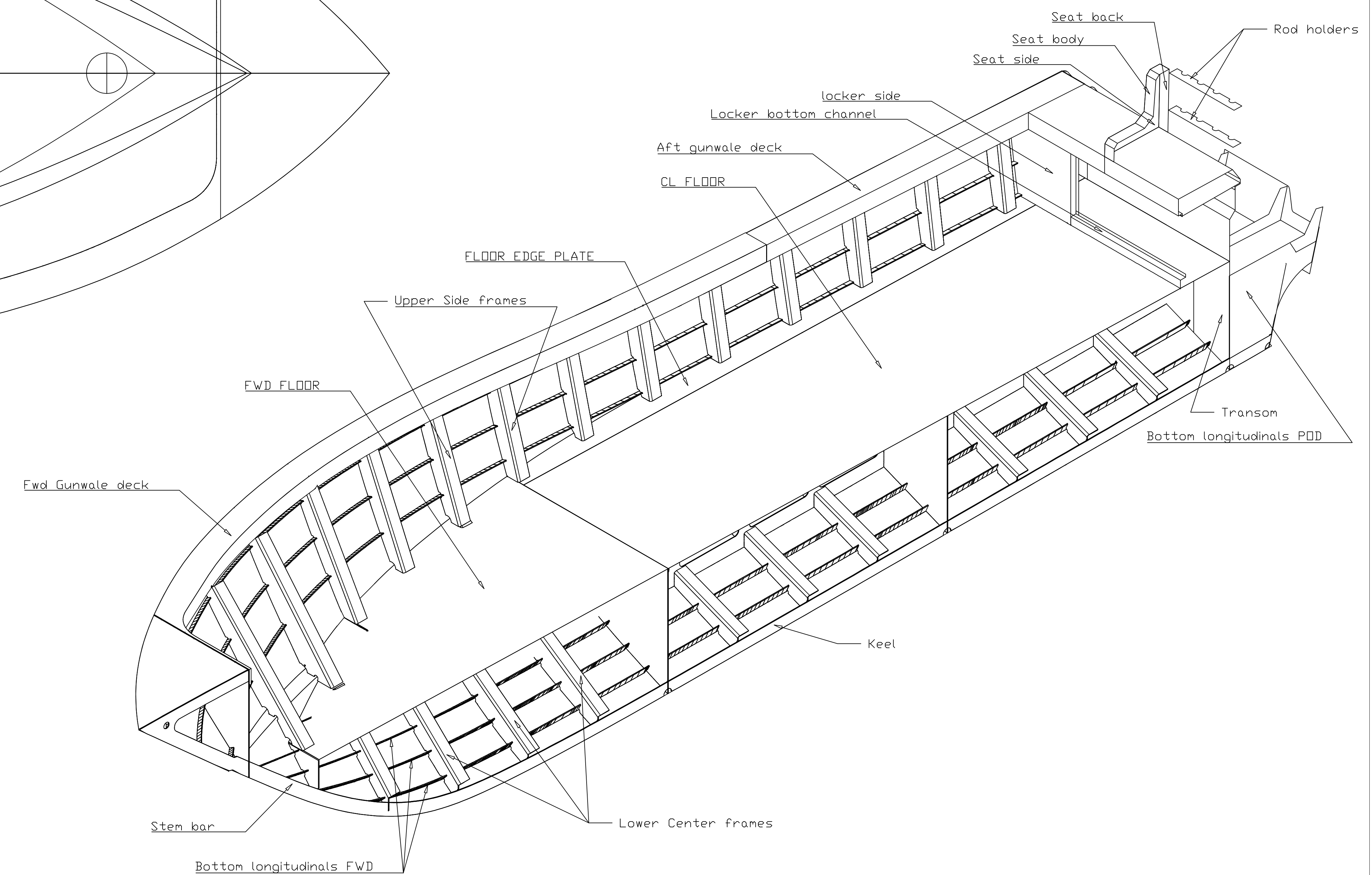
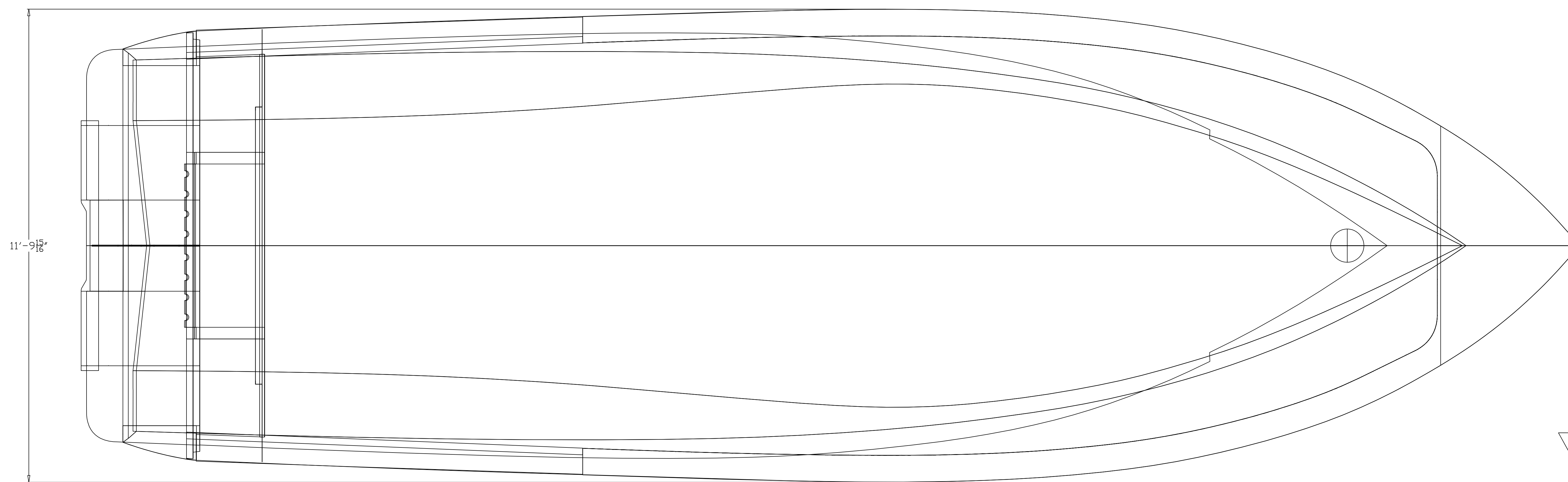
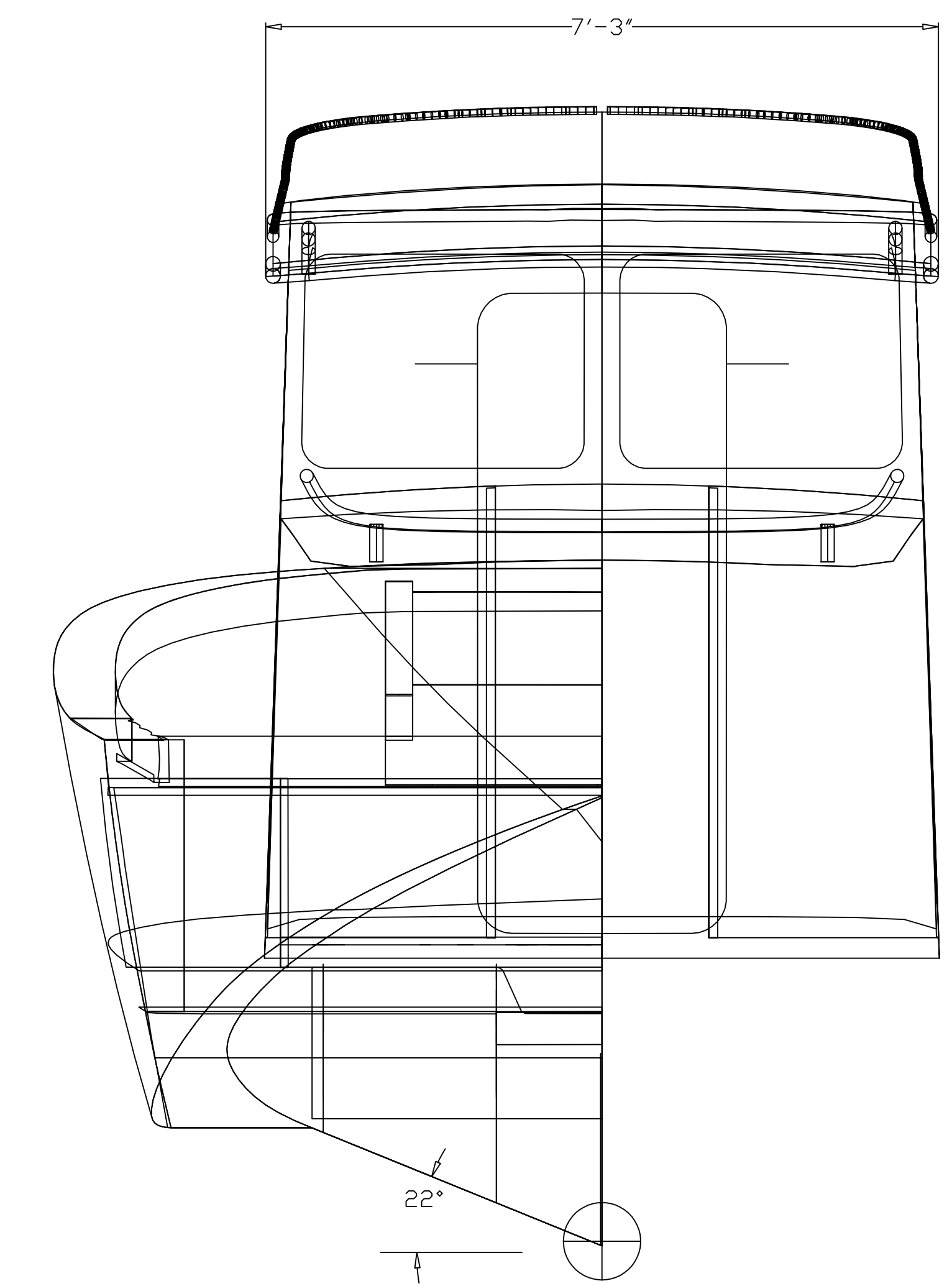
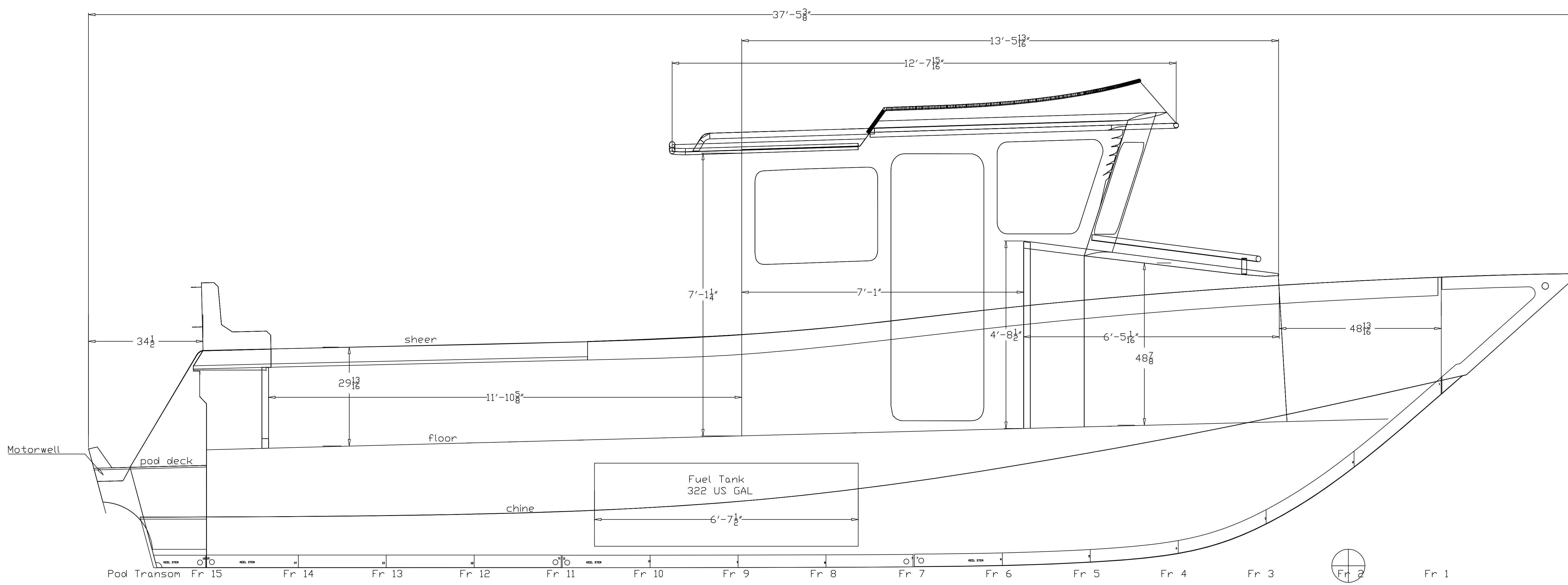


# COPE 36FT X 12FT PATROL BOAT STUDY PLAN DESIGN #085



**Aluminum Plate List**  
Cope 36ft x 12ft Patrol Boat  
Oct 2 2019

1/2" plate  
1 sheet 1/2"x4ftx20ft---5086 H116  
1 sheet 1/2"x4ftx10ft---5086 H116

1/4" sheet  
7 sheets 1/4"x5ftx20ft---5086 H116  
1 sheet 1/4"x5ftx20ft---5052 H32  
1 sheet 1/4"x6ftx20ft---5052 H32

3/16"  
4 sheets 3/16"x5ftx20ft---5086 H116  
2 sheets 3/16"x5ftx20ft---5052 H32  
5 sheets 3/16"x4ftx20ft---5052 H32  
2 sheets 3/16"x6ftx20ft---5052 H32  
1 sheet 3/16"x8ftx10ft---5052 H32

3/8" (160°)  
1 sheet 3/8"x5ftx20ft---5052 H32  
1 sheet 3/8"x4ftx20ft---5052 H32

There is a total of 27 sheets

**Extrusion List**  
Cope 36ft x 12ft Patrol Boat  
Oct 3 2019

Floor Stiffeners ----3/16" x 2" x 3" angle bar 6063 T6 x 24 lengths

Floor Supports horizontal on Bhd ----1/2" x 2" x 2" angle bar 6063 T6 x 2 lengths

Bulkhead stiffening ----1/4" x 1-1/2" x 1-1/2" angle bar 6063 T6 x 3 lengths

**Cope 36ft X 12ft Patrol Boat DB  
Design #085  
STUDY PLAN**

LDA-----37ft 5in  
BDA-----12" with 2" gunwale pipe.  
LWL-----29ft 6in  
Est. Draft-----22"

Est. Displacement-----13,500 lbs  
Projected Max speed-----35 knots  
Projected cruising speed---28 knots

Deadrise @ transom-----15 deg  
Power-----Triple 250 Hp Mercury DB

Designed by A.B.COPE LTD.  
Designer-Bruce Cope  
Oct 2 2019