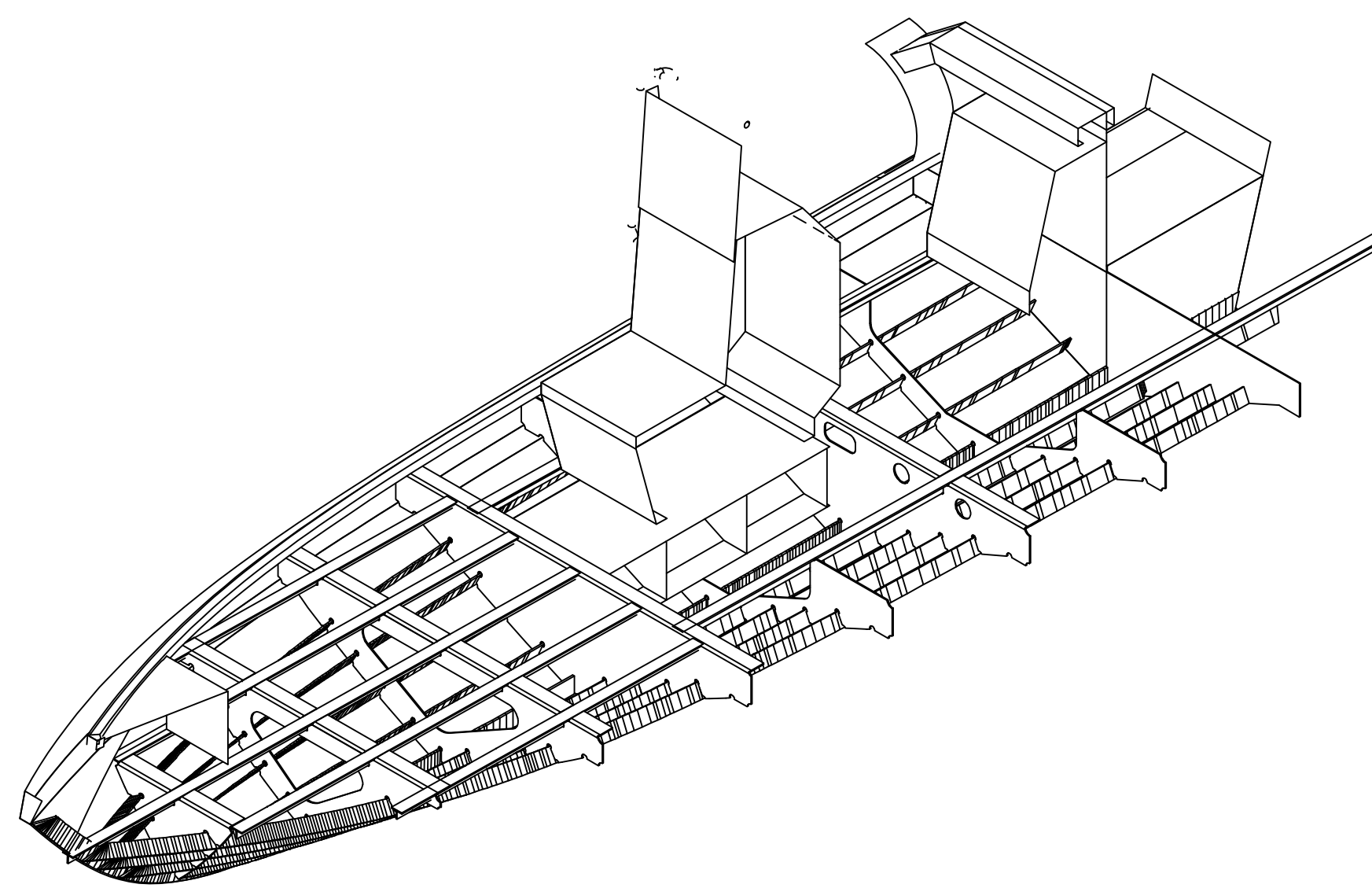
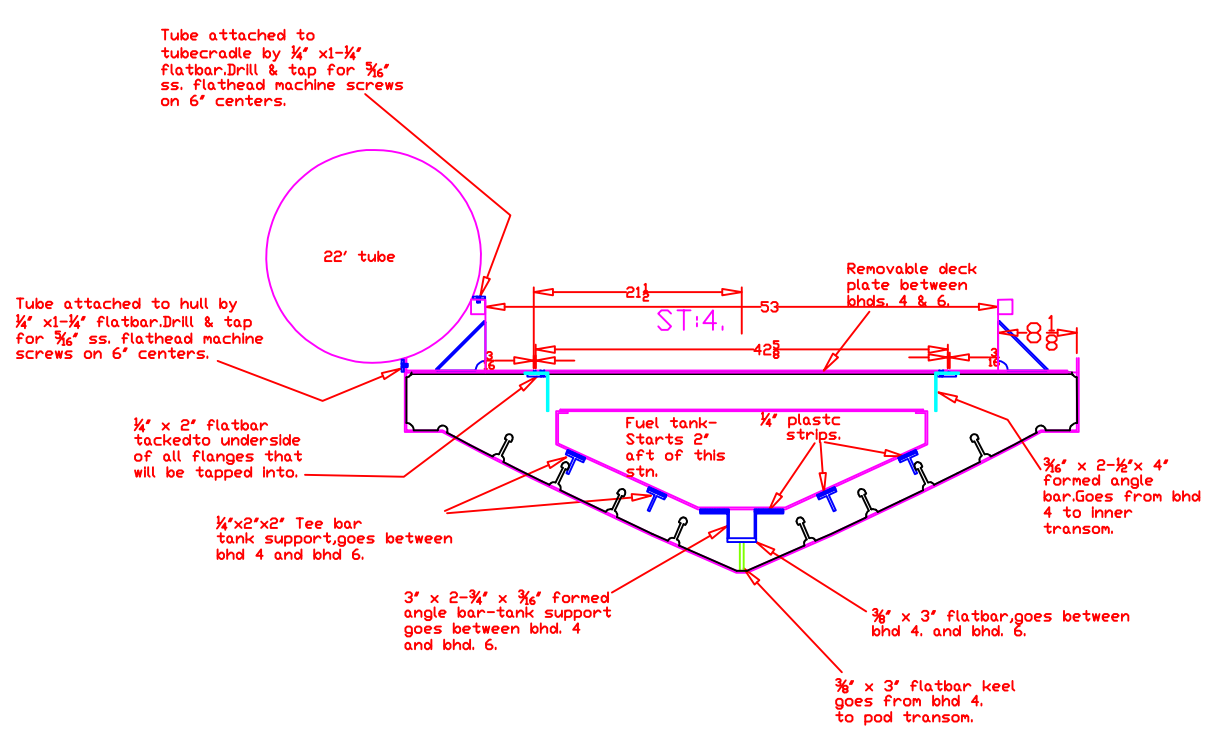
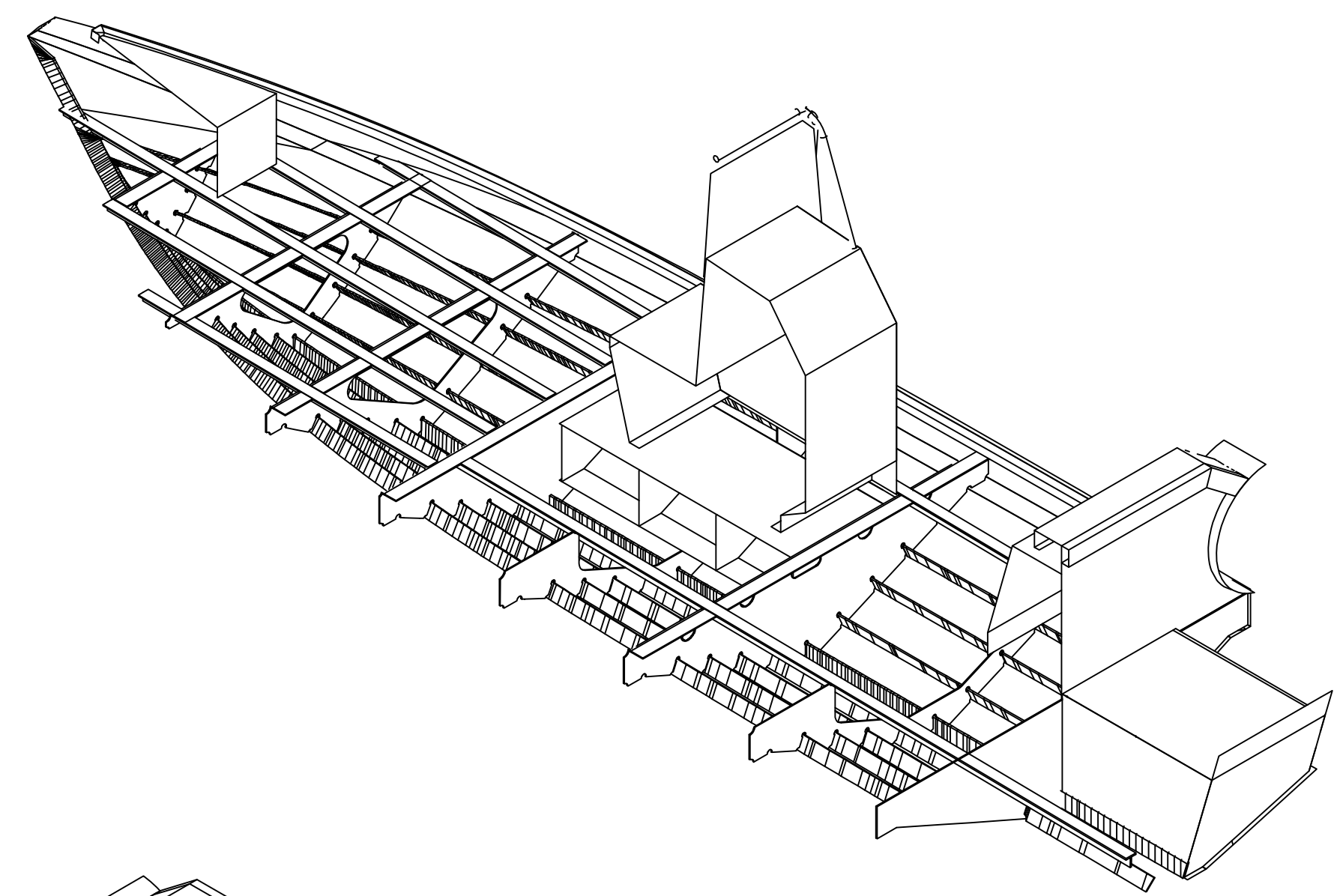
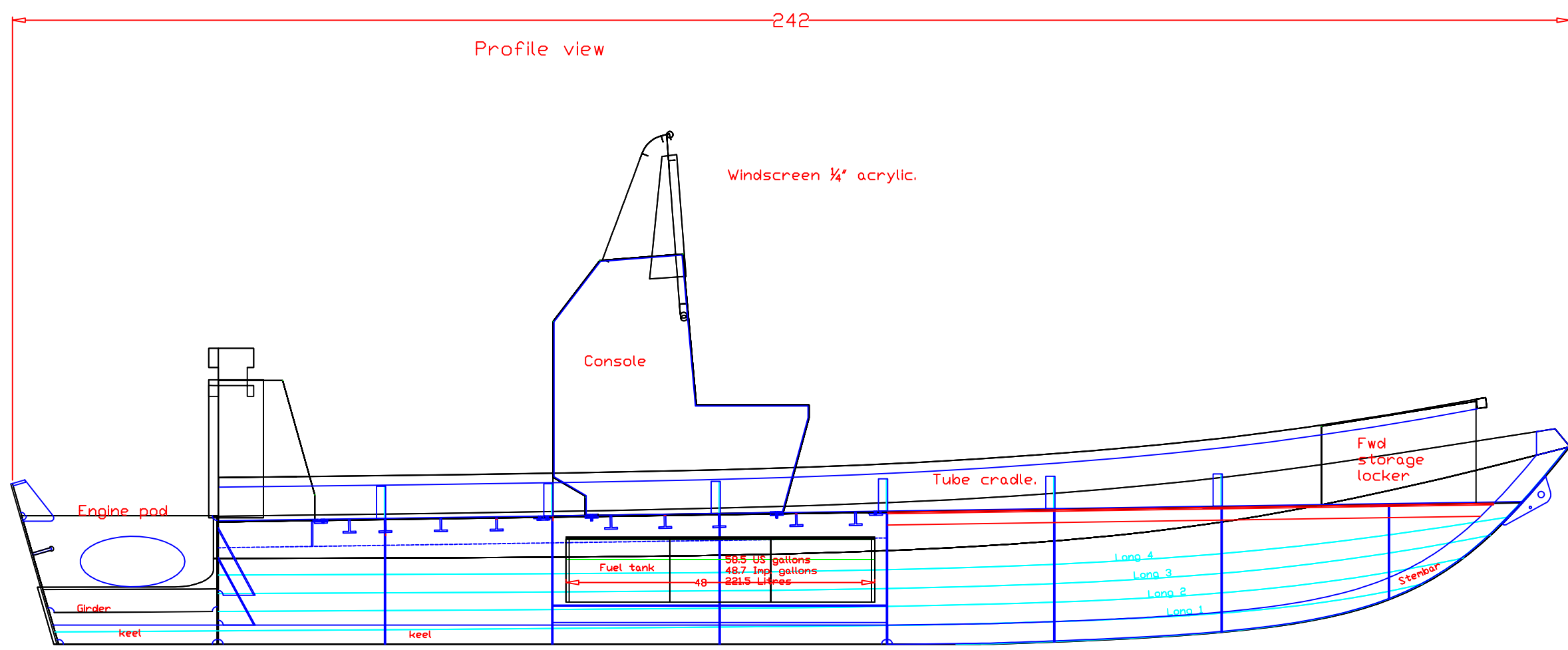


COPE
20ft Rigid Hull Inflatable
Center Console Model



Cope 20ft RIB
Oct 7-2005

Plate list

1 sheet	1/4"x6ftx20ft	5086 H116
2 sheets	1/4"x5ft x20ft	5086 H116
1 sheet	1/4"x4ftx10ft	5086 h116
2 sheets	3/16"x5ft x20ft	5052 H32
1 sheet	3/16"x5ft x10ft	5052 H32
1 sheet	5/32"x4ft x20ft	5052 H32
1 sheet	3/8" x4ft x10ft	5086 H116

Cope 20ft RIB Extrusion List
All Extrusions (profiles) to be Alloy 6061 T6
All lengths to be 20ft
All other dimensions are inches

- 1/4" 2"x2" T bar--5 lengths
- 3/8"x3" Flatbar--1 length
- 1/4"x1-1/4" flatbar---4 lengths
- 1/4"x2" flatbar--2 lengths
- 3/16"x3"x2" angle bar--3 lengths
- 3/16"x1-1/2"x1-1/2" square tube with round corners 2 lengths
- 3/4" schedule 40 pipe-- 1 length (alloy for this profile to be 6063 T5)

Cope
20 ft Center Console
Rigid Hull Inflatable
Aluminum Construction

Length---hull only---20 ft 2 in
Length including tubes---20ft 9 inches
Beam with tubes---104 inches
Beam hull without tubes---80 inches
Draft---24"
Displacement---3000 lbs
Power---Max-225 HP
File: Lines & Construction-20ft Rib Cen Con.dwg

P 1

Designed by A.B.COPE LTD.
Designer-Bruce Cope
Sept -2005

Scale--3/4"=1ft.