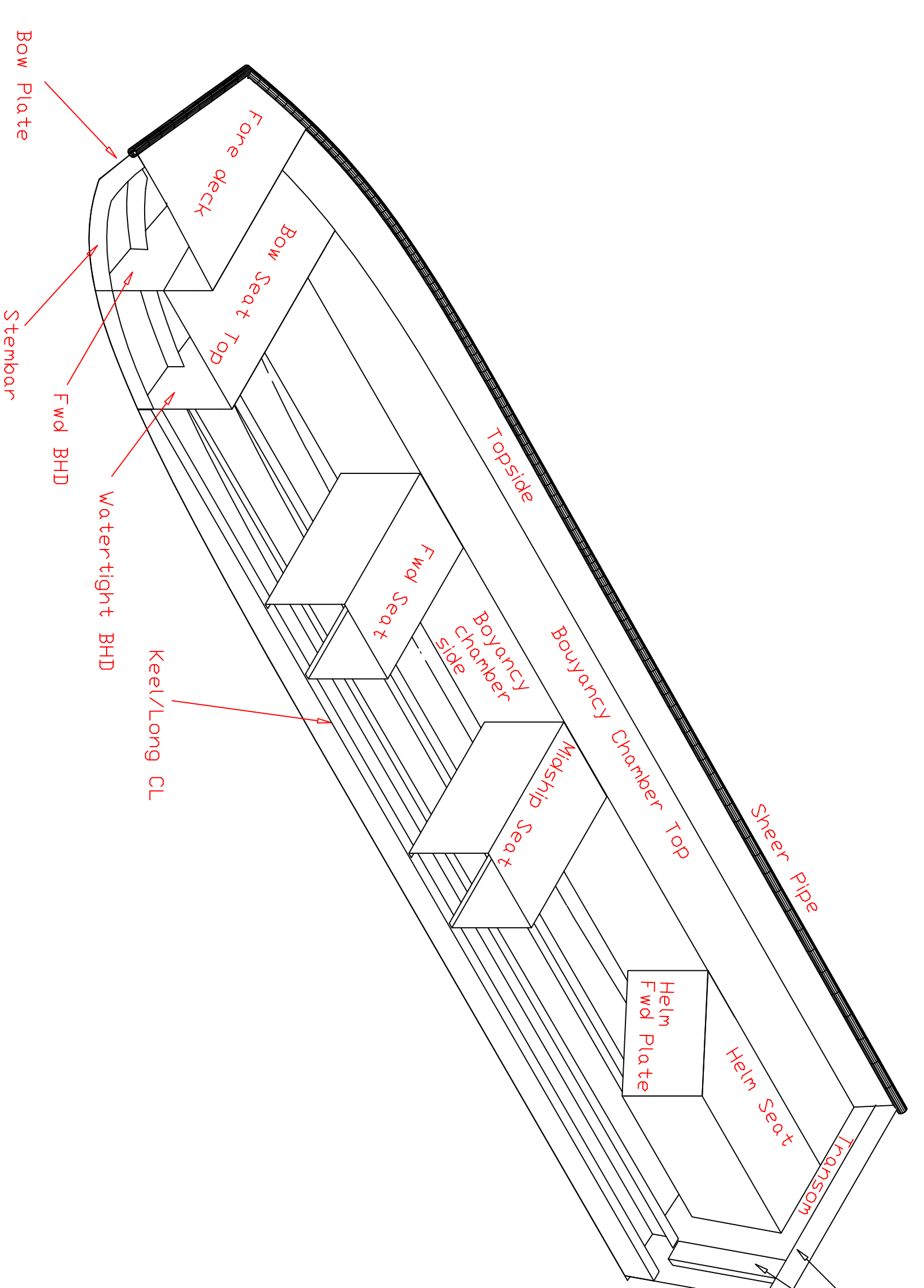
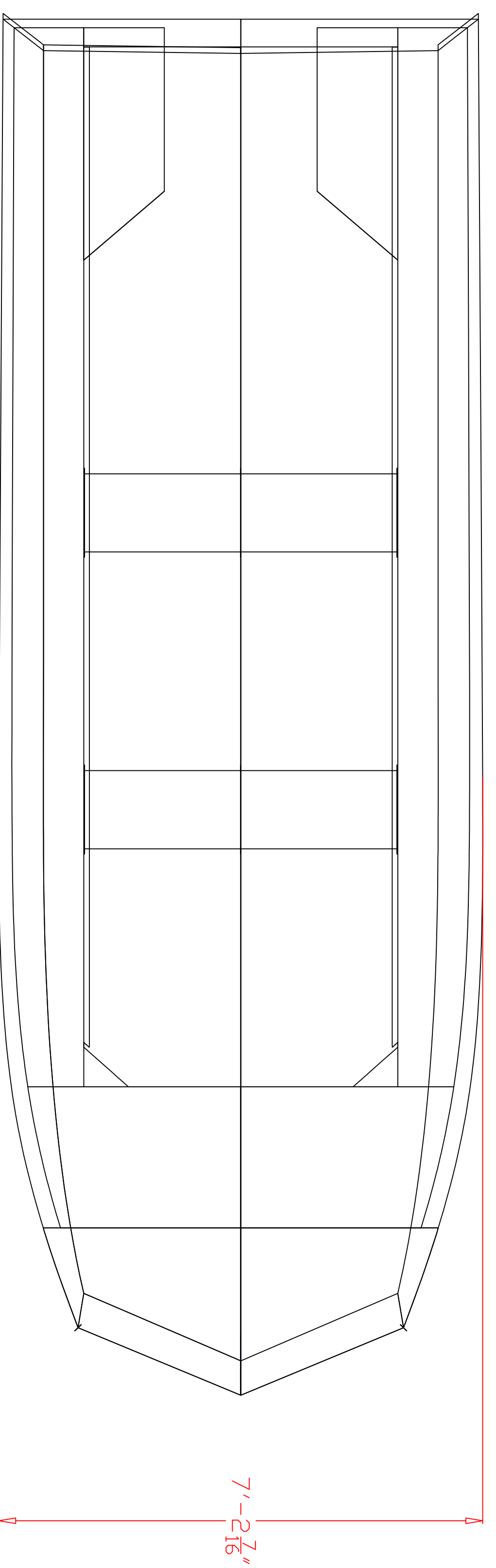
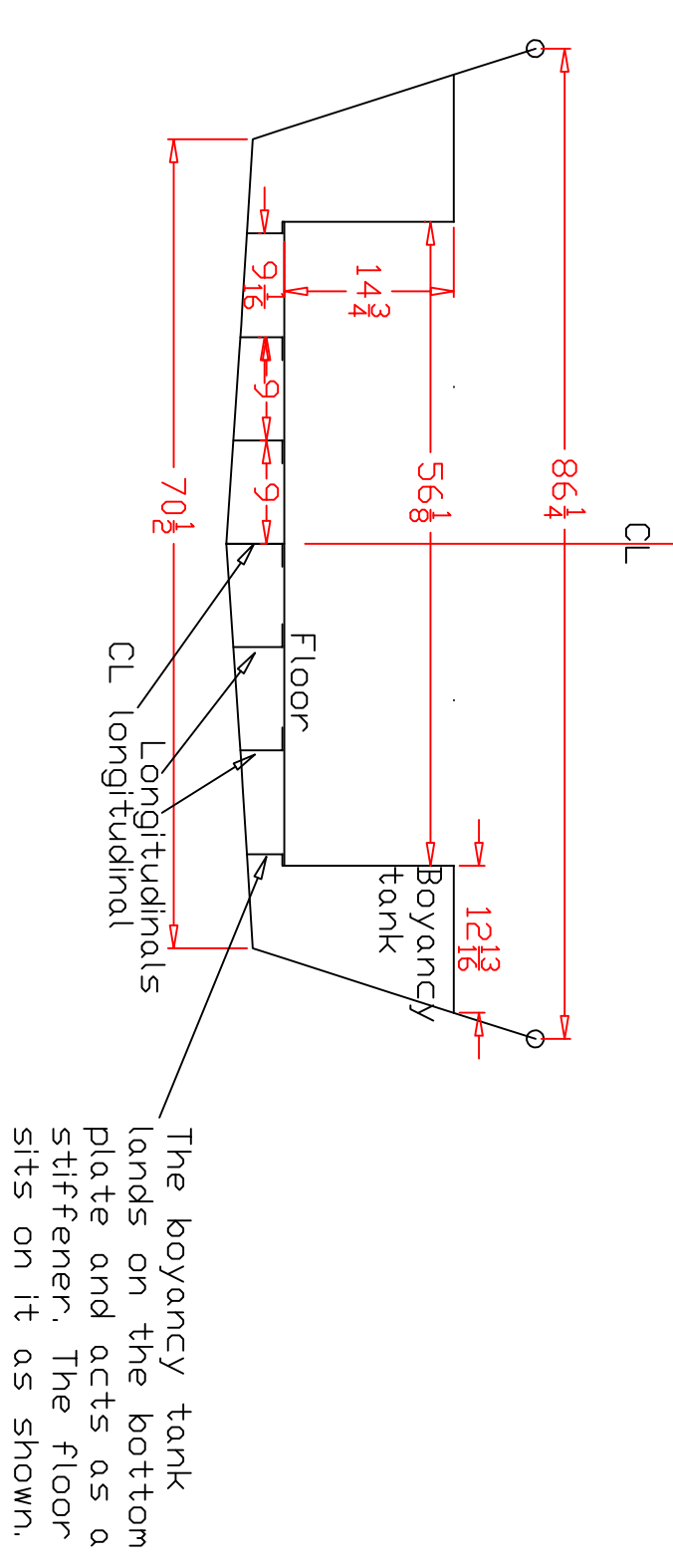
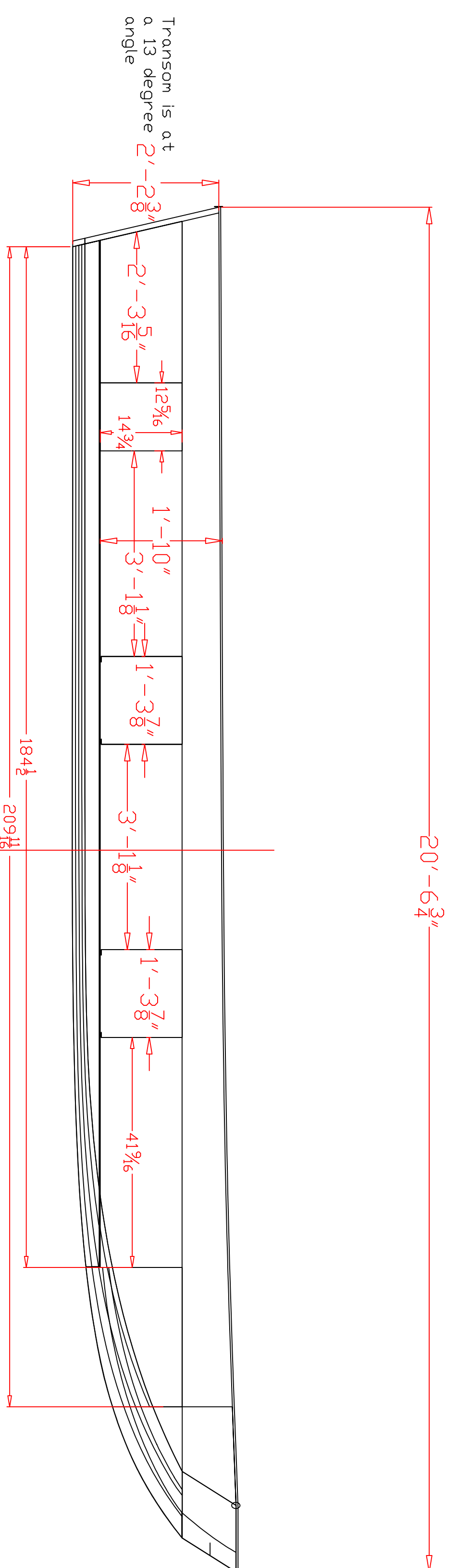


COPE 20FT 7IN. X 7FT 2IN. JETSLED STUDY PLAN

Plate List
20ft x 7ft outboard jetsled
Sept 5-2012

- $\frac{1}{8}$ " 1 sheet-- $\frac{3}{8}$ "x6ft x 20ft 5052 H32
- $\frac{1}{8}$ " 1 sheet-- $\frac{3}{8}$ "x5ft x 20ft 5052 H32
- $\frac{5}{32}$ " 1 sheet-- $\frac{5}{8}$ "x5ft x 20ft 5052 H32
- $\frac{1}{8}$ " 1 sheet-- $\frac{1}{8}$ "x6ft x 20ft 5052 H32
- 1 sheet $\frac{1}{8}$ "x5ft x 20ft 5052 H32
- 2 sheets $\frac{1}{8}$ "x4ft x 10ft 5052 H32

There is a total of 7 sheets



The transom stiffening to support the engine should be 1" x 3" x 2" Channel, either extrusion or formed plate.

Cut the transom to suit the engine you are going to use.

Cope 20ft 7in X 7ft 2in Jetsled
Construction-Aluminum
Measurements-Imperial

LDA-----20ft 7in
Beam-----7ft 2in
Draft-----36 degrees

Designed by A.B.COPE LTD.
Designer-Bruce Cope
August 28 2012