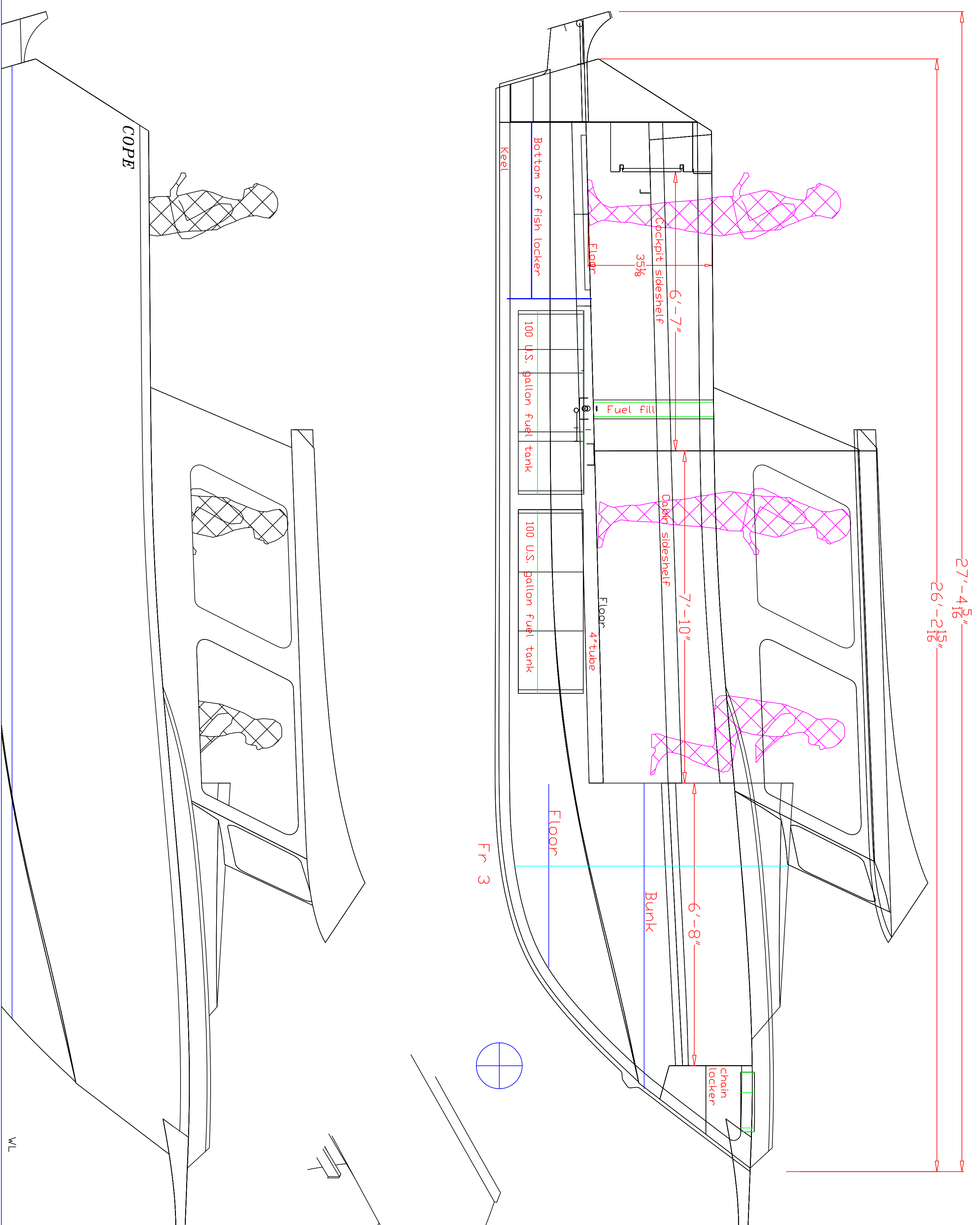
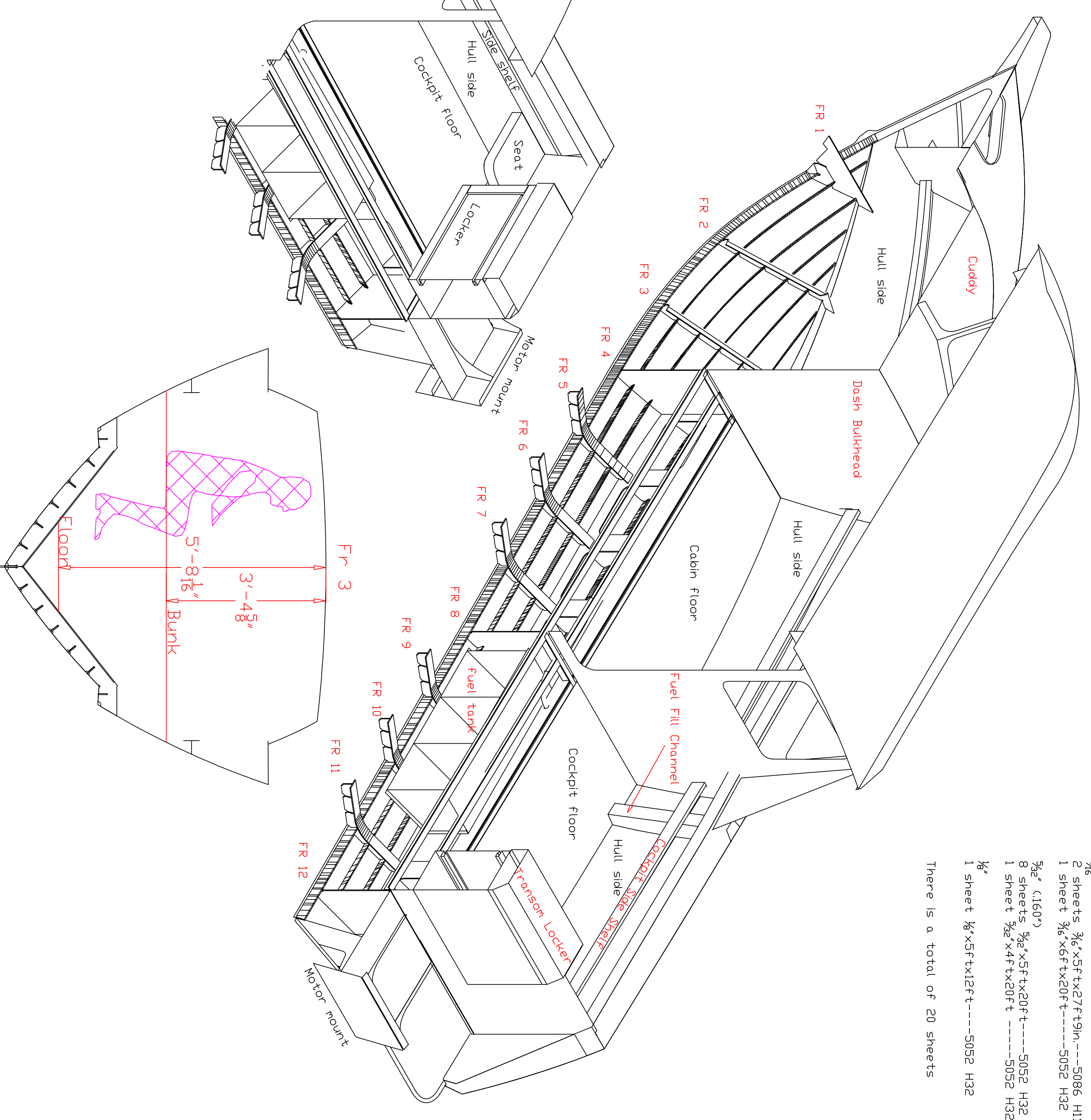
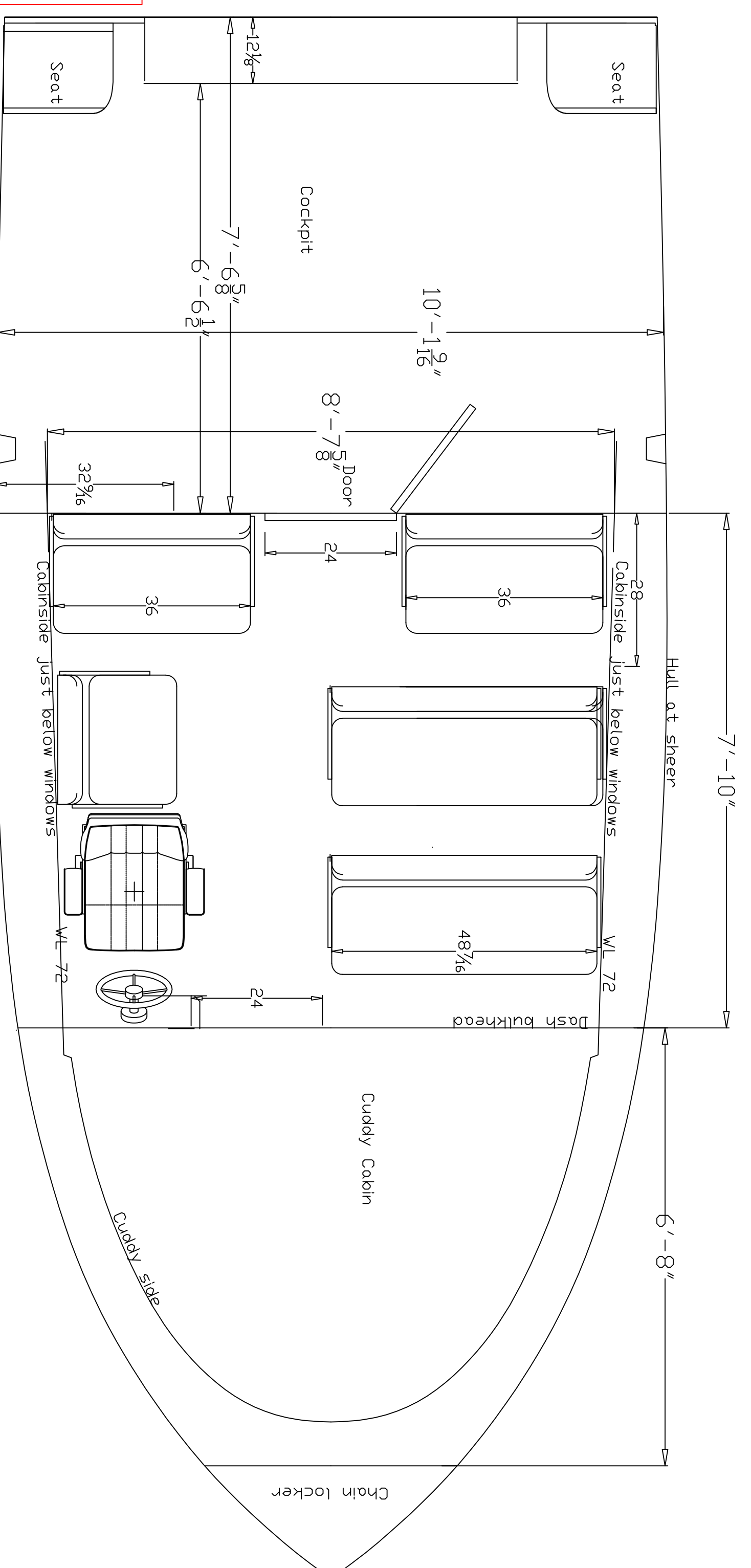


Pachena Point 26  
26ft Outboard Cruiser

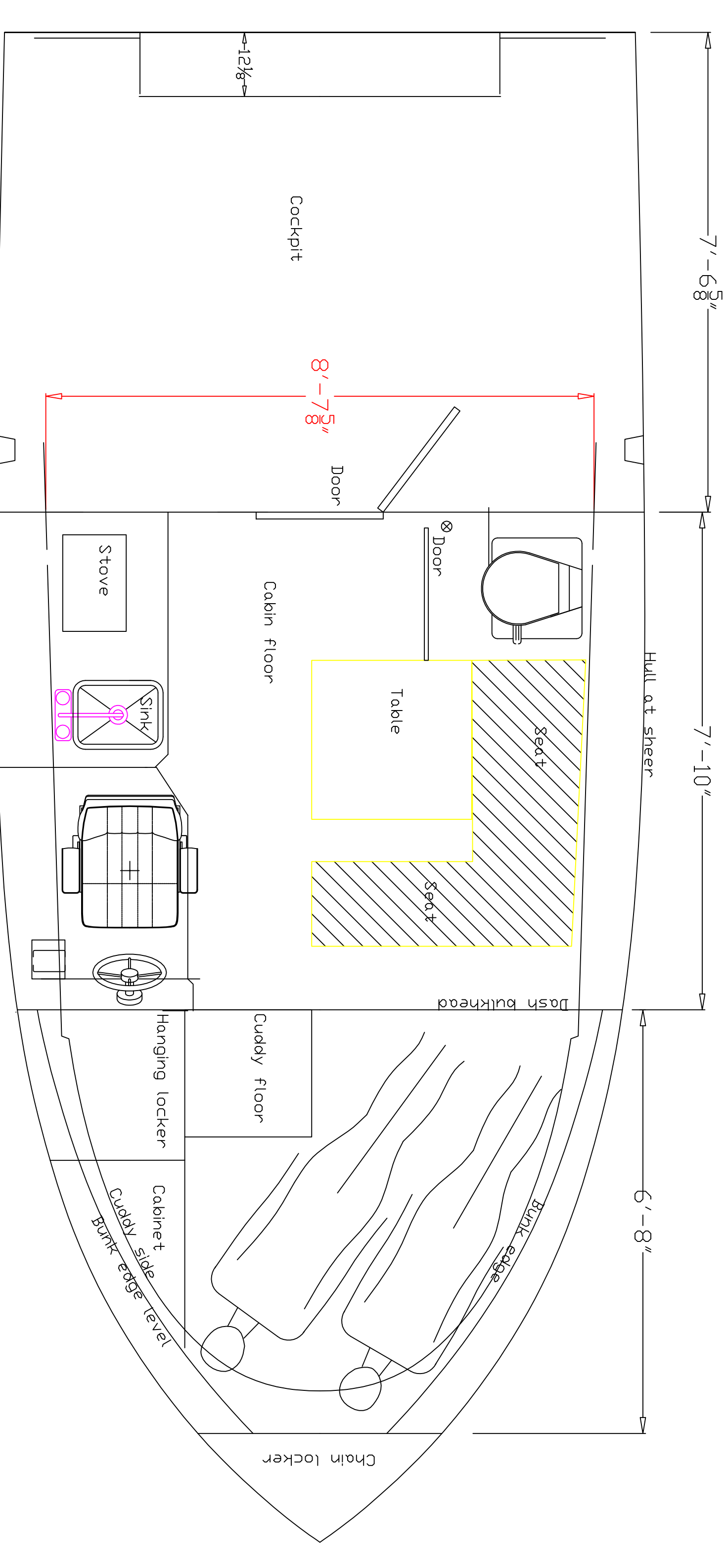


Crewboat-Computer-Water Taxi Layout



- Aluminum Plate List  
Cope 26ft Cruiser  
Nov 23 2013
- 1/4" plate
  - 1 sheet 3/4"x5ftx12ft-----5086 H16
  - 1/4" sheet 1/4"x4ftx20ft-----5086 H16
  - 4 sheets 1/4"x4ftx20ft-----5052 H32
  - 1 sheet 1/4"x4ftx20ft-----5052 H32
  - 1 sheet 1/4"x5ftx20ft-----5086 H16
  - 1 sheet 1/4"x5ftx20ft-----5086 H16
  - 2 sheets 3/4"x5ftx27ftx19in-----5086 H16
  - 1 sheet 3/4"x6ftx20ft-----5052 H32
  - 3/8" (1.60")
  - 8 sheets 3/8"x5ftx20ft-----5052 H32
  - 1 sheet 3/8"x4ftx20ft-----5052 H32
  - 1/4"
  - 1 sheet 3/4"x5ftx12ft-----5052 H32
- There is a total of 20 sheets

Family Cruising Layout  
One of numerous possibilities.



26ft Outboard Cruiser  
Construction-Aluminum

Measurements-Imperial

LDA-----27ft 4in'  
Beam-----10ft 5in'  
Reinforcement-Lightship-----590 lbs  
Displacement-Full Load-----7800 lbs  
Power-----twin 200hp outboards  
Tendrise-----20 degrees  
Designed by AB/COPE LTD.  
Designer-Bruce Cope  
January 17 2014