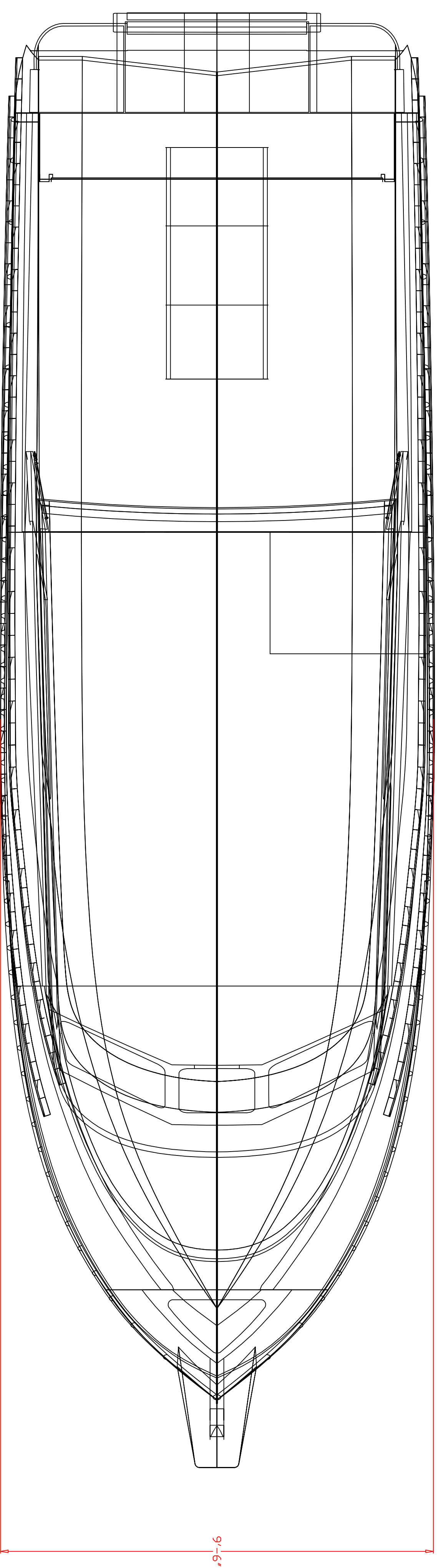
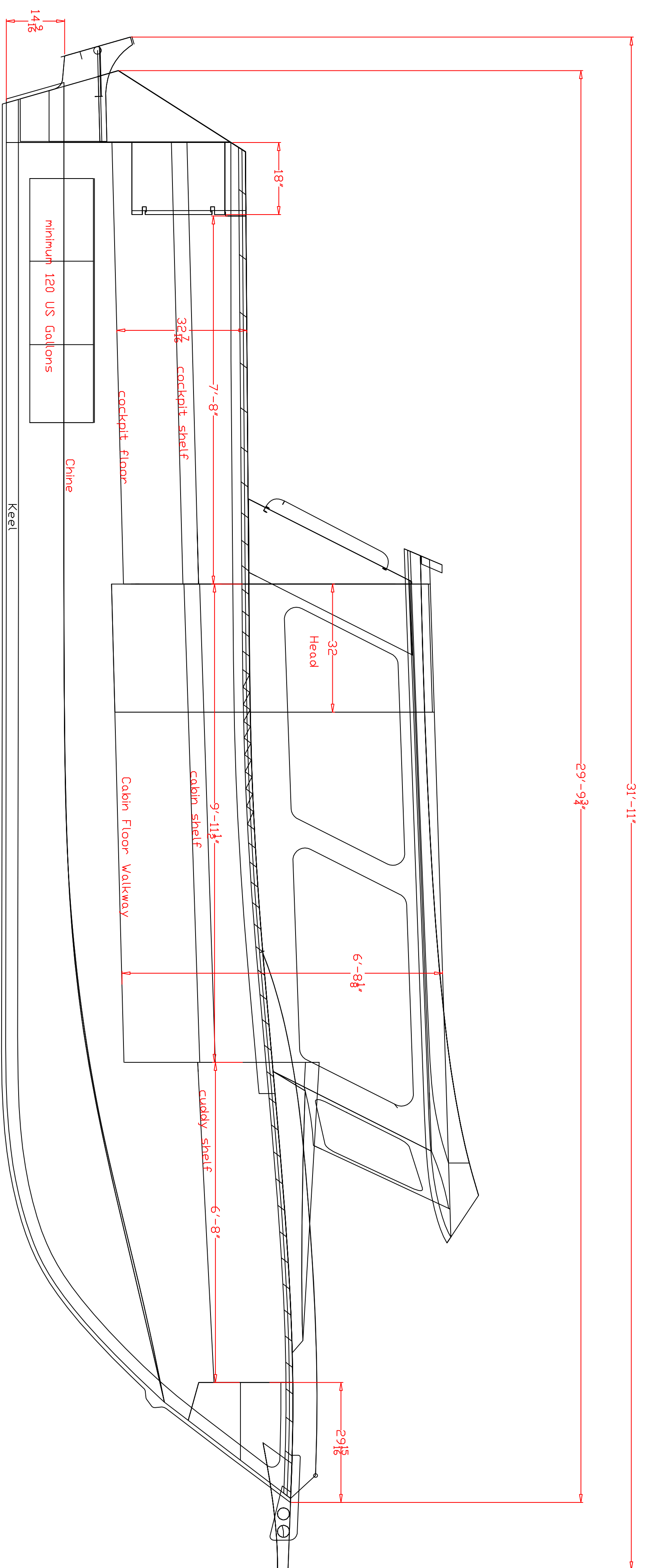
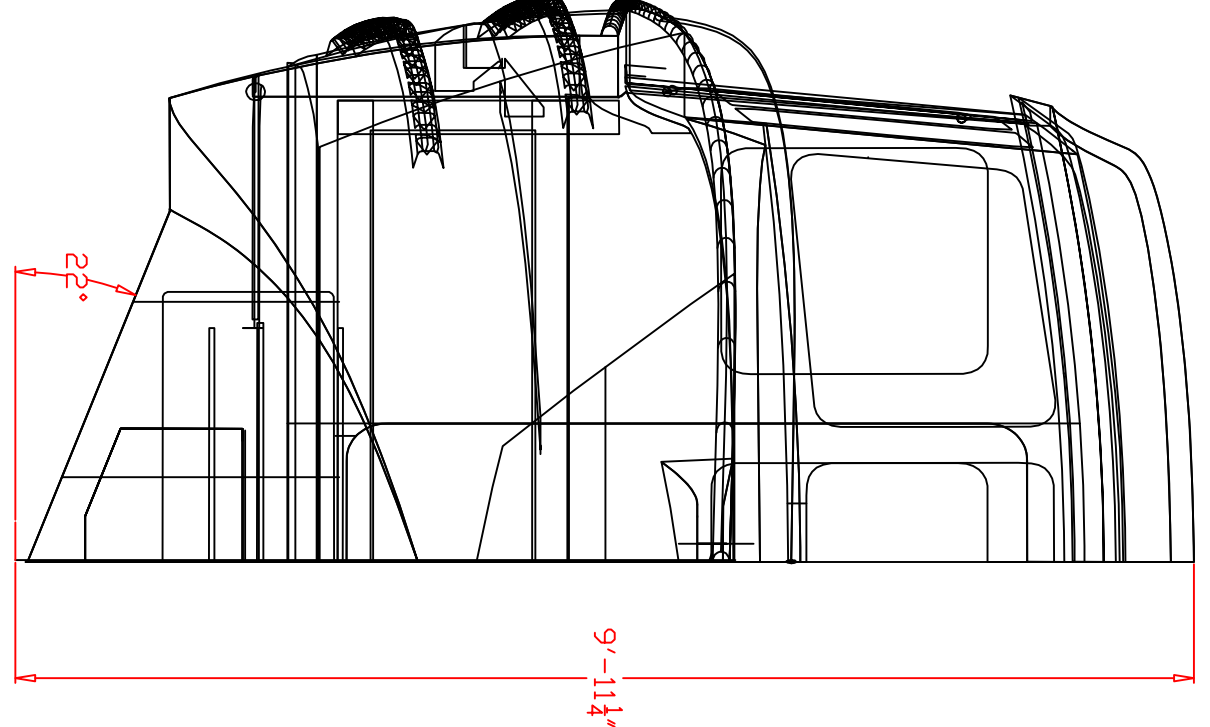
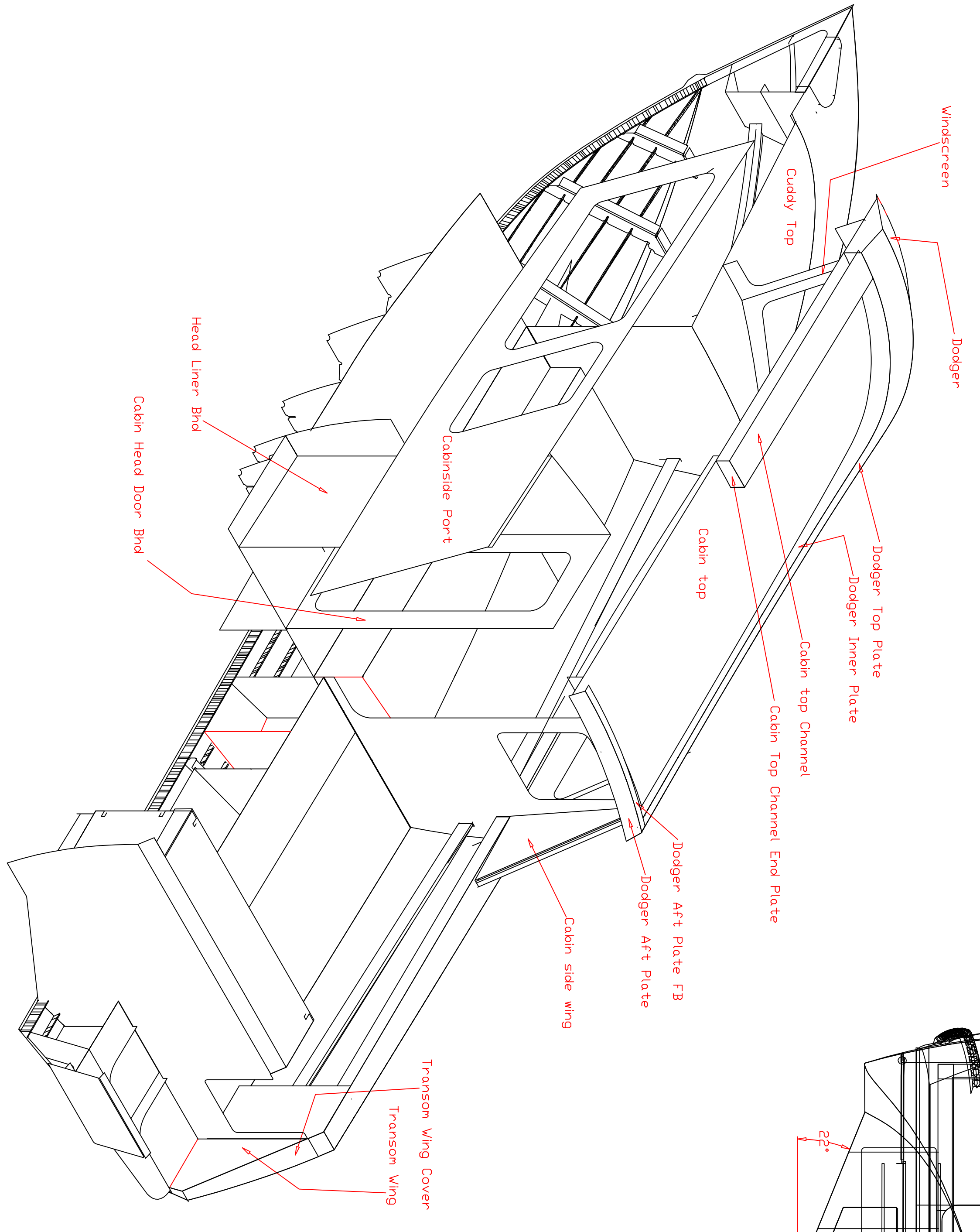
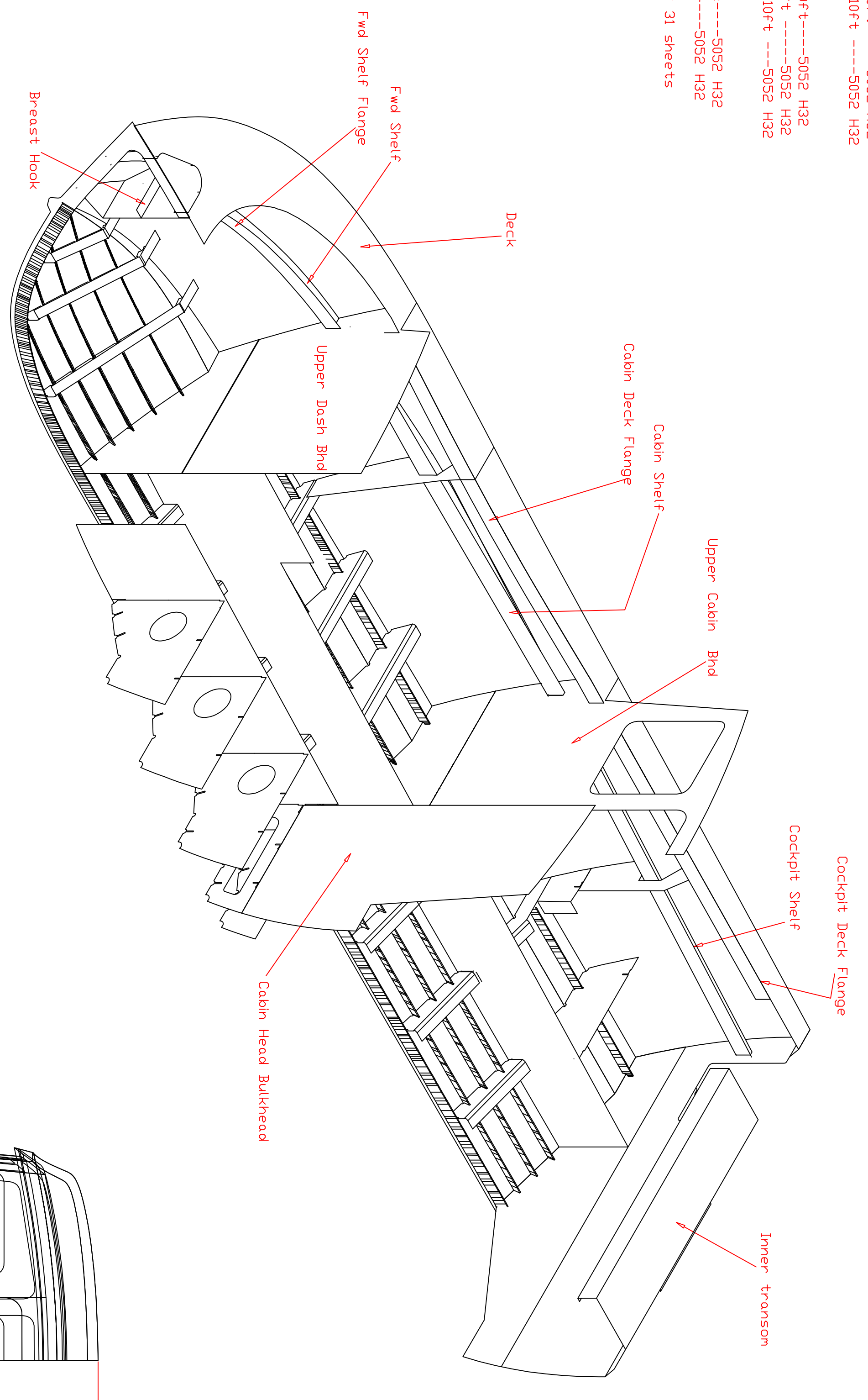


# COPE CORTES ISLAND 30 EXTENDED CABIN STUDY PLAN



- Aluminum Plate List**  
 Cope Cortes Island DB Cruiser - Extended Cabin  
 March 8 2016
- 3/4" plate 3"x5ftx20ft-----5086 H16
  - 1/2" sheet 3"x5ftx20ft-----5086 H16
  - 2 sheets 1"x5ftx20ft-----5086 H16
  - 3 sheet 1"x4ftx20ft-----5086 H16
  - 2 sheet 1"x5ftx20ft-----5050 H32
  - 1 sheet 1" x 4ft x 20ft -----5052 H32
  - 2 sheets 3/4"x5ftx20ft-----5052 H32
  - 4 sheets 3/4"x4ftx20ft-----5052 H32
  - 1 sheet 3/4" x 5ft x20ft -----5052 H32
  - 1 sheet 3/4" x 6ft x 10ft -----5052 H32
  - 2" (1407)
  - 3 sheets 3/4"x5ftx20ft-----5052 H32
  - 3 sheets 3/4"x4ftx20ft -----5052 H32
  - 1 sheets 3/4" x 6ft x10ft -----5052 H32
  - 1 sheet 1"x5ftx20ft-----5052 H32
  - 1 sheet 1"x5ftx8ft-----5052 H32
- There is a total of 31 sheets

- Extension List**
- 1" x 2" x 2' angle bar = 2 x 20ft lengths
  - 1 1/2" x 2 1/2" x 2' angle bar = 2 x 20ft lengths
  - 1 1/2" x 2 1/2" x 1 1/2" angle bar = 2 x 20ft lengths
  - 1 1/2" x 2 1/2" x 1 1/2" angle bar = 2 x 20ft lengths
  - square and rectangular tube
  - 1 1/2" x 2 1/2" square tube = 1x 20ft lengths
  - 1 1/2" x 2 1/2" rectangular tube = 1x 20ft lengths
  - Pipe
  - 1/2" schedule 40 pipe = 3 x 20ft lengths
  - 1/2" schedule 40 pipe = 3 x 20ft lengths
  - 1/2" schedule 40 pipe (optional bowrd) = 2 x 20ft lengths



Cope Cortes Island 30 Extended Cabin  
 (30ft x 9ft6in DB Cruiser-Extended Cabin Model)

Length-----31ft 11in including motor mount  
 and anchor platform  
 Beam-----9ft-6in  
 Power-----40HP Yamaha  
 Fuel Capacity-----22 gallons

Designed by ABCPE LTD  
 Designer-Bruce Cope  
 January 28 2016

Scale--3/4"=1ft.